



Town of Middleborough
 Water Division – Department of Public Works
 65 Sachem Street
 Middleborough, MA 02346
 Phone 508-946-2482

Michael A. Bumpus
 Water Superintendent

November 27, 2023

Re: Checking Your Home for Lead Service Water Line

Dear Customer:

Middleborough Water Department (MWD) is required by Environmental Protection Agency (EPA) to develop a Water Service Line Inventory and is **requesting its customers to identify existing lead service lines**. This mailing includes steps to identify your service line and submit this information to MWD by using the Mass Lead Service Line Identification (MA-LSLI) Web App or by filling out and mailing back the form included in this letter. **This information is being sent to all customers with unknown materials for water services. The water department is offering a \$5 abatement to customers who receive this letter and complete the form online or return the form in the mail.**

Identifying a water service line connecting the water line in the street to your home.

If you do not know or are uncertain if you have a lead service line, take the following two steps:

Online Option – Step 1: IDENTIFICATION



Use EPA’s Protect Your Tap: A Quick Check for Lead (<https://www.epa.gov/ground-water-and-drinking-water/protect-your-tap-quick-check-lead-0> or scan the QR code to the left) to help you determine if your service line is made of lead. Choose Start the Guide at the bottom of the page. Within the guide, choose Municipal Water. Then click on “I’ll skip this step for now or my supplier wasn’t sure. You may still have a lead service line or lead in other plumbing materials or faucets. To confirm, proceed to locate your water line.” Then continue with the guide. It uses pictures and step-by-step directions to identify lead service lines and provides resources to learn more.

Online Option – Step 2: SNAP A PICTURE OF YOUR SERVICE LINE and UPLOAD



Use the MassDEP sponsored web application for consumers, the **Mass Lead Service Line Identification (MA-LSLI) Web App** (<https://app.smartsheet.com/b/form/f9ee39b7972f443ca63e8b936cd7f92b> or scan the QR code to the left). The app may be accessed on your mobile device or any computer online. **Please note you do not need to download anything to your mobile device or computer.** All you need to do is

take a photo, upload it to the ‘app’ website and answer a few basic questions, such as name, address and phone number). EPA’s Protect Your Tap: A Quick Check for Lead guide document from Step 1 will help you know where to take the photo. Voila! You are one step closer to safer drinking water!

PAPER SUBMISSION

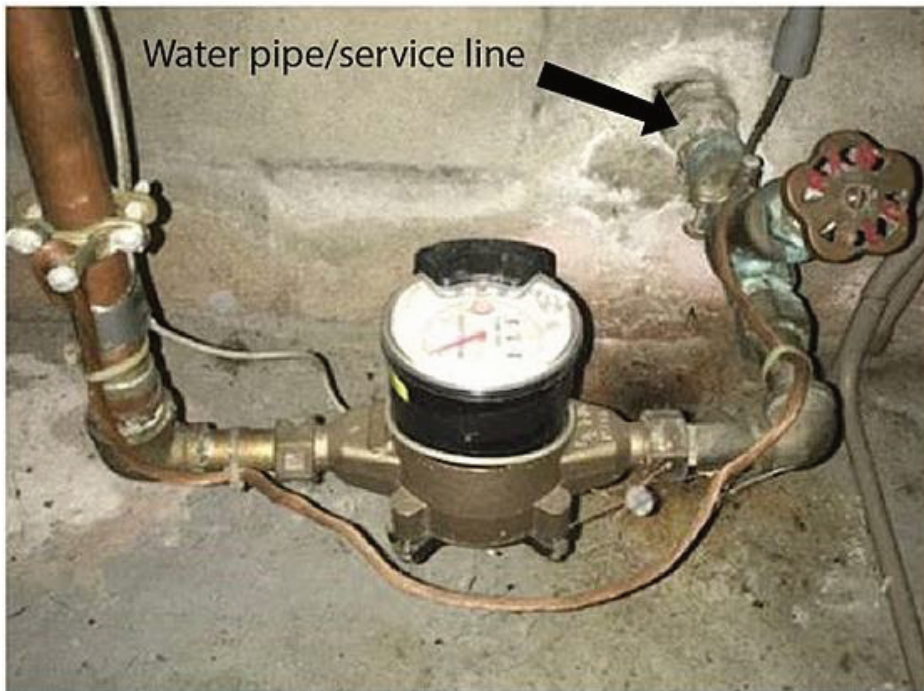
If you prefer to complete this application on paper and return the form on Page 5 to the Middleborough Water Department, please complete the following steps:

Paper Mail Option – Step 1: IDENTIFICATION

- ✓ Find your water meter which may be in your basement, crawl space, garage, or outside.



- ✓ Find your water line/service line. Service lines are the sections of pipe used to connect a home to the main water line. If your meter was inside, the service line should be near it on the same wall. If your meter was outside, the service line should enter the home closest to that spot.



- ✓ Determine pipe material. If your pipe is metal, use a key or a coin to gently scratch the pipe. If the pipe is orange and a magnet won't stick to it, it is likely copper. If the pipe is hard to scratch and a magnet sticks to it, it is likely galvanized steel. If the pipe was easy to scratch and magnet won't stick to it, it may be lead. If your pipe is plastic, there may still be lead in other parts of your plumbing such as faucets.
- ✓ Complete the form on the following page.



Plastic

Scratched Lead

Copper

Galvanized Steel & valve

QUESTIONS AND ADDITIONAL INFORMATION

I'M USING THE ONLINE SUBMISSION, WHO IS MY WATER SUPPLIER?

Your water supplier is Middleborough Water Supply (PWS ID: 4182000).

WHAT WILL OUR SYSTEM DO WHEN WE GET YOUR SUBMISSION?

Once we receive your submission, we will record your data into our inventory database. The Water Department will reach out if you are still unsure of your service line material. Please make sure your contact information is included with your submission.

WHAT WILL HAPPEN IF YOUR SERVICE LINE IS LEAD?

The Water Department has limited funding available to replace lead service lines at no charge to the customer. If a lead line is identified, the Water Department will reach out with information on replacing the service line if funding is still available.

LEAD SERVICE LINE INFORMATION

For more information regarding lead in water services, please see included lead notice and visit the Town website at <https://www.middleboroughma.gov/847/Lead-Service-Line-Inventory-Program>

CONTACT INFORMATION

We look forward to your interest and participation in this program. Thank you for your important input for safe drinking water! If you have any questions, please contact the Middleborough Water Department at WaterInventory@middleboroughma.gov or at 508-946-2482.

Sincerely,

Middleborough Water Department

What you should know about Lead.

Our system's water mains that carry the water to you are made mostly of iron and plastic, and therefore do not add lead to water. However, lead can get into tap water through the service line that connects your home to the water main if it is made of lead. Lead may also come from lead solder used to connect pipes in home plumbing, and from some faucets and fixtures.

When lead is present in water, it is typically due to the water flowing through service lines or internal pipes or plumbing in buildings with lead pipes or plumbing with lead solder or brass.

Exposure to lead in drinking water can cause serious health effects in all age groups. Infants and children can have decreases in IQ and attention span. Lead exposure can lead to new learning and behavior problems or exacerbate existing learning and behavior problems. The children of women who are exposed to lead before or during pregnancy can have increased risk of these adverse health effects. Adults can have increased risks of heart disease, high blood pressure, kidney or nervous system problems. Because lead may pose serious health risks, both the EPA and the Centers for Disease Control and Prevention (CDC) agree that "there is no known safe level of lead in a child's blood".

If you think you have a lead service line and want to reduce your exposure to lead, you should do the following:

- **Use only cold, fresh water for drinking, cooking, and preparing baby formula.** Run the water for at least 1 minute or until after it turns cold.
- **Do not boil the water to remove lead.** Boiling water will not reduce lead. Excessive boiling of water makes the lead and copper more concentrated – the lead and copper remains when the water evaporates.
- **Test your home for lead:** The only way to determine the level of lead in drinking water at your home is to have the water tested by a state certified laboratory. The cost to test is usually between \$10 and \$50. Consider having your paint tested also. A list of labs is available online at <http://eeaonline.eea.state.ma.us/DEP/Labcert/Labcert.aspx> or you can call MassDEP at 978-682-5237 or e-mail Labcert@mass.gov.
- **Consider alternative sources or treatment of water.** If your water contains lead you may want to consider purchasing bottled water or a water filter. If considering a filter read the package to be sure the filter is approved to reduce lead or contact NSF International at 800- NSF-8010 or www.nsf.org for information on performance standards for water filters. Be sure to maintain and replace a filter device in accordance with the manufacturer's instructions to protect water quality. Also, if you are considering using bottled water, note that it may cost up to 1,000 times more than tap water. Simply flushing your tap, as described above, is usually a cheaper and equally effective alternative.
- **Check whether your home has a lead service line. IF YOU DO, HAVE IT REMOVED.**
- **Contact your health care provider or your local health department to find out if your child needs to be tested for lead.** A blood lead level test is the only way to know if your child is being exposed to lead. For more information on Massachusetts' childhood lead testing program, contact the Department of Public Health (DPH) at <https://www.mass.gov/orgs/childhood-lead-poisoning-prevention-program> or at 1-800-532-9571.
- **If you have health concerns,** please contact your health care provider with any questions.

For more information on Lead see <https://www.mass.gov/lead-in-drinking-water>

Paper Mail Option – Step 2: FILL OUT FORM and MAIL TO MIDDLEBOROUGH WATER DEPT.

If you choose not to use the Online Submission, fill out this form and mail it to the Middleborough Water Department, 65 Sachem Street, Middleborough, MA 02346. If you completed the Online Submission, you do not need to fill out and return the form below.

Are you the owner or a tenant (renter)?

First Name

Last Name

Email Address

Phone Number

Street Address

House Construction Year

Service Line Material (Plastic, Lead, Copper,
Galvanized Steel, Don't Know) *

* If you are unsure, it's okay to select the material you believe it to be. If necessary, the Middleborough Water Department will follow up with you.

